

**CITY OF TONKAWA
TONKAWA, OKLAHOMA
NOTICE OF SPECIAL MEETING**

The City Council of Tonkawa, Oklahoma will meet at 11:00 a.m. on Monday, June 30, 2025, in the City Council Room, 115 S 7th St., Tonkawa, OK 74653 for a Special Meeting.

All items on this agenda, including but not limited to any agenda item concerning the adoption of any ordinance, resolution, contract, agreement, or any other item of business, are subject to **Amendment**, including additions and/or deletions. This rule will apply to every individual agenda item without exception, and without providing this same **Amendment** language with respect to each individual agenda item. Such **Amendments** should be rationally related to the topic of the agenda item, or the governing body will be advised to continue the item.

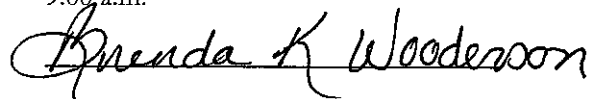
The governing body may adopt, approve, ratify, deny, defer, recommend, amend, strike, or continue any agenda item. When more information is needed to act on an item, the governing body may refer the matter to its City/Trust Manager, Staff, Attorney or to the Recommendation Board, Commission or Committee.

AGENDA

June 30, 2025, at 11:00 a.m.

1. Call To Order.
2. Consider And Vote To Approve An Invoice From Worth Hydrochem Of Okla., Inc. In The Amount Of \$19,911.90 For Basin Pump Repair During The Water Emergency.
3. Consider And Vote To Approve An Invoice From Edwards Equipment, LLC In The Amount Of \$161,421.00 For Rehab Of The Love's Lift Station.
4. Consider And Vote To Approve A Second Advertisement For Sealed Bids On A Steelweld Press Brake Standard Model H3 ½-10 To Be Opened On Monday, July 28, 2025.
5. Consider And Vote On Amending The Operating Budget Of Various Funds For City Of Tonkawa FY 2024-25.
6. Adjourn.

The above Notice was posted at Tonkawa
City Hall on the 25th day of June 2025 at
9:00 a.m.


City Clerk

NOTICE

The City of Tonkawa encourages citizen participation. If your participation at this meeting is not possible due to a disability or language barrier, please notify the City Clerk, at least 24 hours prior to the above-mentioned time of the meeting, so that any necessary arrangements can be made.



Worth Hydrochem of Okla., Inc.

P.O. Box 6447
Norman, OK 73070-6447
USA

Voice: 405-366-7729
Fax: 405-366-7728

INVOICE

Invoice Number: 13674IN
Invoice Date: Mar 21, 2025
Page: 1

Bill To:
City of Tonkawa 113 S. 7th st Tonkawa, Ok 74653

Ship to:
City of Tonkawa 113 S. 7th st Tonkawa, OK 74653

Customer ID	Customer PO	Payment Terms	
Tonkawa		Net 30 Days	
Sales Rep ID	Shipping Method	Ship Date	Due Date
PoseyAmber			4/20/25

Quantity	Item	Description	Unit Price	Amount
1.00		Labor remove and install pump, rebuild	17,950.00	17,950.00
8.00	SVO-LaborMun-Jake	-Labor for Service Technician Jake Walton	185.00	1,480.00
2.20	SVO-LaborMun-Jared	-Labor for Service Technician Jared Wilson on 7.23.24	185.00	407.00
107.00	SVO-Mileage	-Mileage to and from job	0.70	74.90

RECEIVED
MAR 26 2025
BY: _____

Subtotal	19,911.90
Sales Tax	
Total Invoice Amount	19,911.90
Payment/Credit Applied	
TOTAL	19,911.90

Check/Credit Memo No:

Finance Charge on accounts over 30 days overdue.



EDWARDS EQUIPMENT, LLC

20010 N PEEBLY RD
LUTHER, OK 73054

DATE REC'D 6-19-2025

REC'D BY BW

Invoice

Date	Invoice #
6/6/2025	3269

Bill To
CITY OF TONKAWA 113 SOUTH 7TH TONKAWA, OK 74653

Ship To
216 NORTH 6TH TONKAWA, OK 74653

P.O. Number	Terms	Rep	Ship	Via	F.O.B.	Project
EMAIL	NET 30	SE	6/6/2025			14951-LOVES LS REHAB

Quantity	Item Code	Description	Price Each	Amount
1	JOB DEPOSITS	Barnes 4ESCMB25044, Submersible, Liquid Temperature 40C, Sithe Chopper, 4 inch discharge, hydraulic series MB, 25 HP, 1750 rpm, 460 volts, 3 phase, impeller trimmed to 265mm, Impeller Material Ductile Iron, Carbon / Sil Car Upper, Sil Car / Sil Car Lower seal, Explosion Proof = N, Sensors Standard, 5 Year Full Warranty from Shipment QTY 2 - CORD,SET,HV,8/4,18/4,30' QTY 2 - 131307 - ASSY,INTERMEDIATE,BAF4X4 QTY 2 - ASSEMBLY,BAF4X4 NEMA 4X SS Duplex Pump Control Panel/alarm horn and beacon Labor to Convert the existing wetwell into a submersible wetwell Include aluminum hatches for wetwell and valve vault Labor to demo all equipment not needed Supply and install Sch 80 PVC 4" pipe in wetwell and valve assembly Supply new gate valves and new ball check valves Tie into existing forcemain Install necessary electrical to power up the control panel. Cleanup all loose materials and trash. Startup and training	139,960.00	139,960.00
1	JOB DEPOSITS	SPARE PUMP QTY 1: Barnes 4ESCMB25044, Submersible, Liquid Temperature 40C, Sithe Chopper, 4 inch discharge, hydraulic series MB, 25 HP, 1750 rpm, 460 volts, 3 phase, impeller trimmed to 265mm, Impeller Material Ductile Iron, Carbon / Sil Car Upper, Sil Car / Sil Car Lower seal, Explosion Proof = N, Sensors Standard, 5 Year Full Warranty from Shipment	21,461.00	21,461.00

Phone #	Fax #	E-mail	Web Site	Total
405-315-5488	405-578-4067	Laura@edwardsequipmentllc.com	edwardsequipmentllc.com	\$161,421.00

THE

STEELWELD

LINE

Standard Model **H3 1/2-8**
Steelweld Press Brake. Bending
capacity: 8' x 5/16"

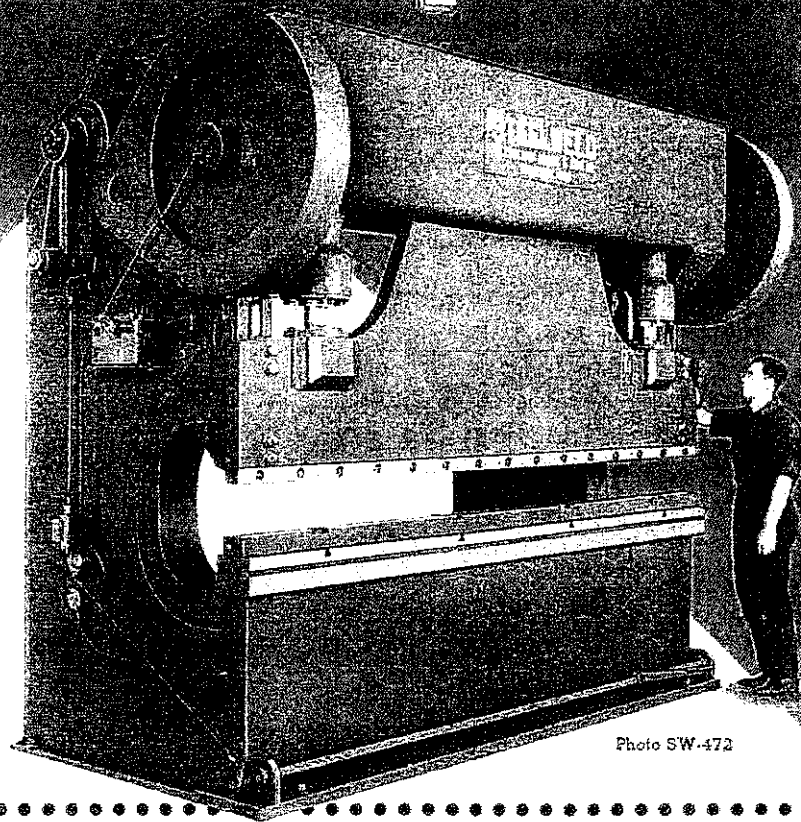


Photo SW-472

MODEL

H

SERIES

Model **H3 1/2-10** with 1'-0"
bed and ram extension on left
end. Bends 10' x 1/4"

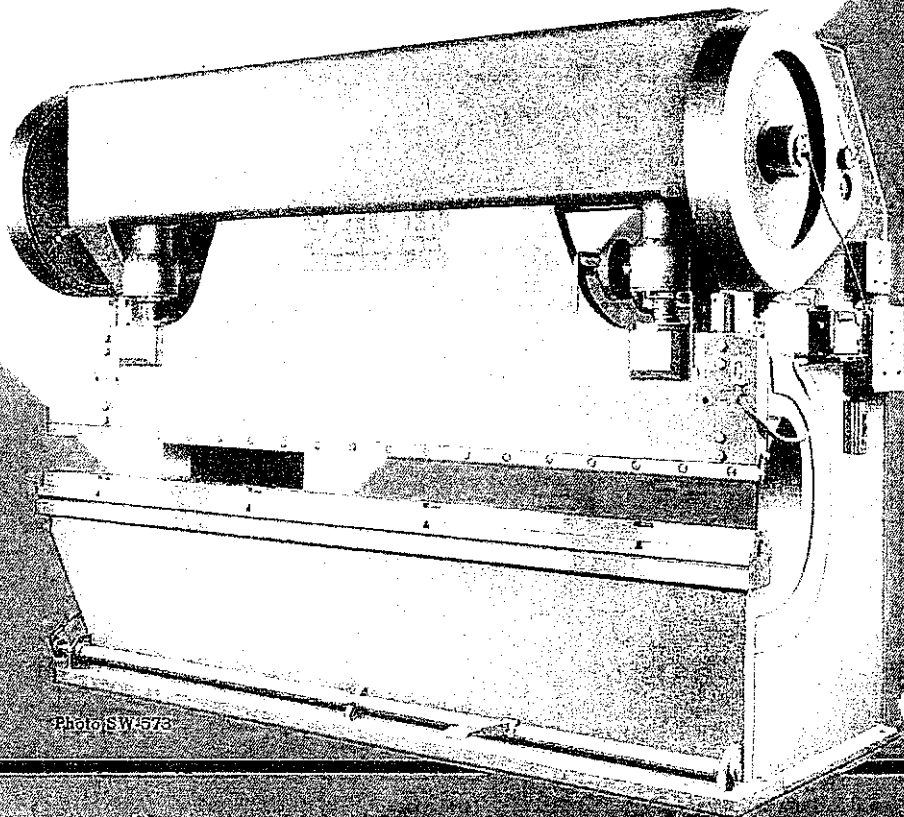


Photo SW-573

CLEARANCES DIMENSIONS and SPECIFICATIONS

NOTES FOR TABLE BELOW

DEPTH OF THROAT of all machines is 18" standard.
TONGUE SLOT in bed and ram of all machines is 1/2" wide x 3/4" deep.

*Machines can be furnished with greater distances between housings. These have beds which extend below floor.

**RATED CAPACITY assumes the bending of mild steel to 90° angle using a die having an opening equal to 8 times the thickness of material, to produce an inside radius equal to the thickness of the material being formed.

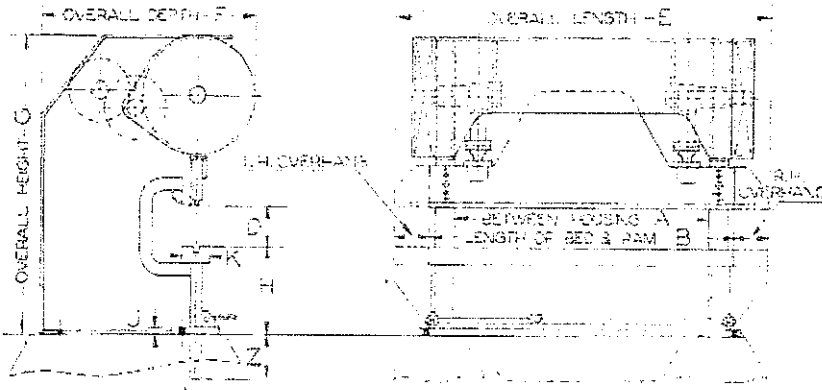
***SHUT HEIGHT is die space with stroke down and ram adjustment up. Ram adjustment on all machines is 6" maximum, except for model R which is 7".

†8-ft. or longer machines can be furnished with beds below floor, for minimum deflection, if desired.

A high slip, high torque, punch press type, 40° C., continuous duty motor is used for the main drive. It is controlled by a magnetic reversing, full voltage starter, with forward, reverse and stop push buttons.

Adjusting motor is hoist type, high slip, squirrel cage, 15 min. rating, totally enclosed non-ventilated, with push button reversing starter and raise-lower buttons.

††Where capacity work is done at every stroke of the machine, a somewhat larger motor will be required. Standard equipment includes micrometer dial and screw adjustment limit gauges, two automatic pressure lubrication systems, necessary special wrenches, plain bolster ram arranged for taper work, main drive Vee belts, motor pulley and load indicator on both ends of press.



Model Number	Distance Between Housings A*	Standard Length of Bed and Ram B	Stroke Bending Capacity	Stroke Inches	STROKES PER MINUTE		Shut Height D	APPROXIMATE OVERALL DIMEN.			Height of Bed H	Thick-ness of Base Plate J	Width of Top of Bed K	Depth of Bed Below Floor Z	Main Drive Motor H.P. R.P.M.	Approx. Weight
					Single Speed	Two Speed		Length E	Depth F	Height G						
H3 1/2-6	6'-6"	8'-0"	6' x 1/8"	3 1/2"	25	25-8	12"	9'-11"	6'-2"	9'-6"	36"	0"	7 1/2"	0"		19500
H3 1/2-8	8'-6"	10'-0"	8' x 1/8"	3 1/2"	25	25-8	12"	11'-11"	6'-2"	9'-6"	36"	2"	7 1/2"	0"	7 1/2 @	23000
H3 1/2-10	10'-6"	12'-0"	10' x 1/8"	3 1/2"	25	25-8	12"	13'-11"	6'-2"	9'-6"	36"	2 1/2"	7 1/2"	0"	1200	27500
H3 1/2-12	12'-6"	14'-0"	12' x 1/8"	3 1/2"	25	25-8	12"	15'-11"	6'-2"	9'-6"	36"	3"	7 1/2"	0"		34000
I4-6	6'-6"	8'-0"	6' x 1/2"	4"	22	22-7	14"	10'-0"	6'-10"	10'-8"	38"	0"	8 1/2"	0"		25000
I4-8	8'-6"	10'-0"	8' x 1/2"	4"	22	22-7	14"	12'-0"	6'-10"	10'-8"	38"	2 1/2"	8 1/2"	0"	10 @	30500
I4-10	10'-6"	12'-0"	10' x 1/2"	4"	22	22-7	14"	14'-0"	6'-10"	10'-8"	38"	3"	8 1/2"	0"	1800	34500
I4-12	12'-6"	14'-0"	12' x 1/2"	4"	22	22-7	14"	16'-0"	6'-10"	10'-8"	38"	4"	8 1/2"	0"		42000
J4 1/2-6	6'-6"	8'-0"	6' x 1/16"	4 1/2"	20	20-7	14"	10'-0"	7'-4"	11'-2"	38"	0"	9 1/2"	0"		30000
J4 1/2-8	8'-6"	10'-0"	8' x 1/16"	4 1/2"	20	20-7	14"	12'-0"	7'-4"	11'-2"	38"	3"	9 1/2"	0"	15 @	38000
J4 1/2-10	10'-6"	12'-0"	10' x 1/16"	4 1/2"	20	20-7	14"	14'-0"	7'-4"	11'-2"	38"	3"	9 1/2"	0"	1200	44000
J4 1/2-12	12'-6"	14'-0"	12' x 1/16"	4 1/2"	20	20-7	14"	16'-0"	7'-4"	11'-2"	38"	4"	9 1/2"	0"		51000
J4 1/2-14	14'-6"	16'-0"	14' x 1/16"	4 1/2"	20	20-7	14"	18'-0"	7'-4"	11'-2"	38"	0"	9 1/2"	37"		57500
K5-8	8'-6"	10'-2"	8' x 5/8"	5"	20	20-7	14"	12'-3"	7'-9"	11'-8"	40"	4"	10 1/2"	0"		43000
K5-10	10'-6"	12'-2"	10' x 1/2"	5"	20	20-7	14"	14'-3"	7'-9"	11'-8"	40"	4"	10 1/2"	0"	20 @	52500
K5-12	12'-6"	14'-2"	12' x 3/8"	5"	20	20-7	14"	16'-3"	7'-9"	11'-8"	40"	5"	10 1/2"	0"	1200	61500
K5-14	14'-6"	16'-2"	14' x 1/8"	5"	20	20-7	14"	18'-3"	7'-9"	11'-8"	40"	0"	10 1/2"	38"		73000
L5 1/2-8	8'-6"	10'-4"	8' x 3/4"	5 1/2"	20	20-7	14"	12'-6"	8'-5"	12'-7"	42"	4"	11 1/2"	0"		55000
L5 1/2-10	10'-6"	12'-4"	10' x 5/8"	5 1/2"	20	20-7	14"	14'-6"	8'-5"	12'-7"	42"	5"	11 1/2"	0"	25 @	69000
L5 1/2-12	12'-6"	14'-4"	12' x 1/2"	5 1/2"	20	20-7	14"	16'-6"	8'-5"	12'-7"	42"	5"	11 1/2"	0"	1200	76000
L5 1/2-14	14'-6"	16'-4"	14' x 3/8"	5 1/2"	20	20-7	14"	18'-6"	8'-5"	12'-7"	42"	0"	11 1/2"	40"		89000
MO6-8	8'-6"	10'-6"	9' x 1/2"	6"	20	20-7	16"	12'-8"	9'-2"	13'-2"	42"	4"	12 1/2"	0"		65000
MO6-10	10'-6"	12'-6"	11' x 3/4"	6"	20	20-7	16"	14'-8"	9'-2"	13'-2"	42"	5"	12 1/2"	0"	30 @	80000
MO6-12	12'-6"	14'-6"	13' x 5/8"	6"	20	20-7	16"	16'-8"	9'-2"	13'-2"	42"	6"	12 1/2"	0"	1200	88500
MO6-14	14'-6"	16'-6"	16' x 1/2"	6"	20	20-7	16"	18'-8"	9'-2"	13'-2"	42"	0"	12 1/2"	42"		104000
R7-8	8'-6"	12'-0"	8' x 1 1/8"	7"		19-7	18"	14'-0"	11'-0"	17'-2"	42"	5"	15 1/2"	0"		90000
R7-10	10'-6"	14'-0"	10' x 1 1/8"	7"		19-7	18"	16'-0"	11'-0"	17'-2"	42"	6"	15 1/2"	0"	40 @	105000
R7-12	12'-6"	16'-0"	12' x 7/8"	7"		19-7	18"	18'-0"	11'-0"	17'-2"	42"		15 1/2"	36"	1800	120000
R7-14	14'-6"	18'-0"	14' x 3/4"	7"		19-7	18"	20'-0"	11'-0"	17'-2"	42"		15 1/2"	44"		135000

SPECIFICATIONS

THE CLEVELAND CRANE
& ENGINEERING CO.

WICKLIFFE, OHIO

PRESS MODEL H31/2-10 SERIAL NO. M-6005

CAPACITY FOR 90° BEND IN MILD
STEEL OVER DIE OPENING EIGHT
TIMES THICKNESS OF MATERIAL

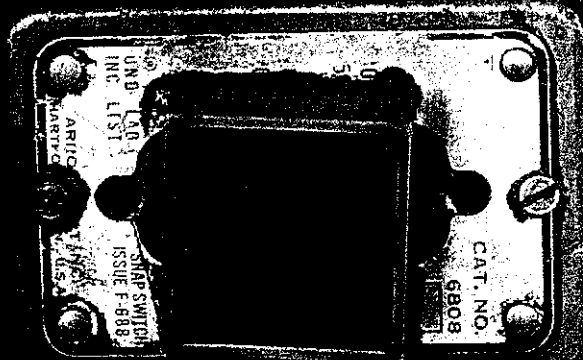
THICKNESS	LENGTH
3/16	12-0
1/4	10-0
5/16	8-0

IF POSSIBLE, ALL BENDS TO BE MADE
IN CENTER OF PRESS TO EQUALIZE LOAD

USE MINERAL BASE LUBRICANTS ONLY
NEUTRAL GREASE FOR FITTINGS
S.A.E. 30 OIL IN LUBRICATORS
S.A.E. 30 OIL IN GEAR CASE

PATENTS

1997672 199864 2312755



Approved BUDGET 2024-2025	Actual Revenue and Expenditures YTD May 2025	PROPOSED Amendments June 2025	PROPOSED AMENDED BUDGET 2024-2025	Increase or (Decrease)
------------------------------	--	-------------------------------------	--------------------------------------	---------------------------

Operating Revenues	Approved BUDGET 2024-2025	Actual Revenue and Expenditures YTD May 2025	PROPOSED Amendments June 2025	PROPOSED AMENDED BUDGET 2024-2025	Increase or (Decrease)	
Electric Revenue	4,944,000	4,405,833		4,944,000	0	89.11%
Sewer Revenue	339,900	340,834		339,900	0	100.27%
Sanitation Revenue	392,700	401,931		392,700	0	102.35%
Water Revenue	690,100	674,359		690,100	0	97.72%
Gas Revenues	77,250	138,123		77,250	0	178.80%
Other Revenues, (Late Charges, Interest, Etc.)	223,500	293,546		223,500	0	131.34%
OWRB Loan Reimb.	5,458,000	730,827		5,458,000	0	
OWRB/DWSRF Loan - Water					0	
					0	
	0			0	0	
TOTAL INCOME	12,125,450	6,985,453	0	12,125,450	0	

Operating Expenses

51 - Trust Manager/Administration	632,378	379,122		632,378	0	59.95%
52 - Trash	330,000	294,597		330,000	0	89.27%
53/55 - Electric/OMPA	4,338,887	3,389,025		4,338,887	0	78.11%
54 - Water	5,848,755	2,164,106		5,848,755	0	37.00%
56 - Sewer	632,360	231,404		632,360	0	36.59%
57 - Natural Gas	387,036	122,511		387,036	0	31.65%
TOTAL EXPENDITURES	12,169,416	6,580,765	0	12,169,416	\$ -	
OPERATING INCOME (LOSS) before Transfers In/Out	(43,966)	404,688	0	(43,966)	\$ -	
NON-OPERATING REVENUES (EXPENSES) Transfers In/Out -	(359,500)	351,383			(359,500)	
					0	
TOTAL OTHER FINANCING SOURCES (USES)	(359,500)	351,383	0	0	359,500	
NET INCOME	(403,466)	756,071	0	(43,966)	359,500	

City of Tonkawa

June 2025 Amendment

Exhibit 1

	BUDGET 2025	Actual Revenue and Expenditures YTD May 2025	PROPOSED Amendments June 2025	PROPOSED AMENDED BUDGET 2024/2025	Increase or (Decrease)	
Operating Revenues						
Tax Revenues	1,816,443	1,996,902	130,000	1,946,443	130,000	110%
Franchise Fees	26,000	27,698		26,000	0	107%
Licenses & Permits	7,000	9,391		7,000	0	134%
Intergovernmental	42,000	44,136		42,000	0	105%
CDBG Water Project Grant				0	0	0%
Fines and Forfeitures	80,000	51,138		80,000	0	64%
Grants & Donations, CARES Act/ARPA Funds	100,000			100,000	0	0%
Charges for Services	345,000	336,770		345,000	0	98%
County Ambulance Tax	156,000	183,184		156,000	0	117%
Rental	60,000	59,516		60,000	0	99%
Miscellaneous	282,000	218,812		282,000	0	78%
TOTAL INCOME	2,914,443	2,927,547	130,000	3,044,443	130,000	#DIV/0!
						100%

Operating Expenses

10/11 - City Manager & City Administration	361,268	381,174	80,000	441,268	80,000	106%
12 - Police	1,053,310	975,456	50,000	1,103,310	50,000	93%
23 Emergency Management	27,000	16,343		27,000	0	61%
13 - Fire	568,505	467,683		568,505	0	82%
14 - Ambulance, Lifeline and Lifepaks	570,098	451,185		570,098	0	79%
15 - Streets	281,051	81,219		281,051	0	29%
16 - Municipal Court	93,241	67,121		93,241	0	72%
17 - Library	206,018	179,803		206,018	0	87%
18 - Airport	30,050	20,570		30,050	0	68%
19 - Parks	357,542	178,684		357,542	0	50%
20 - E911	256,042	224,306		256,042	0	88%
21 - Code Enforcement	41,900	12,216		41,900	0	29%
22 - Tonkawa Pride and Beautification	36,500	18,876		36,500	0	52%
TOTAL EXPENDITURES	3,882,525	3,074,636	130,000	4,012,525	130,000	
REVENUES OVER (UNDER) EXPENDITURES	(968,082)	(147,089)	0	(968,082)	0	15%
Other Income						
Investment Income	120,000	119,453				
Transfers In/Out	604,559	(189,759)		604,559	0	-31%
TOTAL OTHER FINANCING SOURCES (USES)	(243,523)	(217,395)	-	(363,523)	-	89%
NET INCOME	(243,523)	(217,395)	-	(363,523)	-	89%